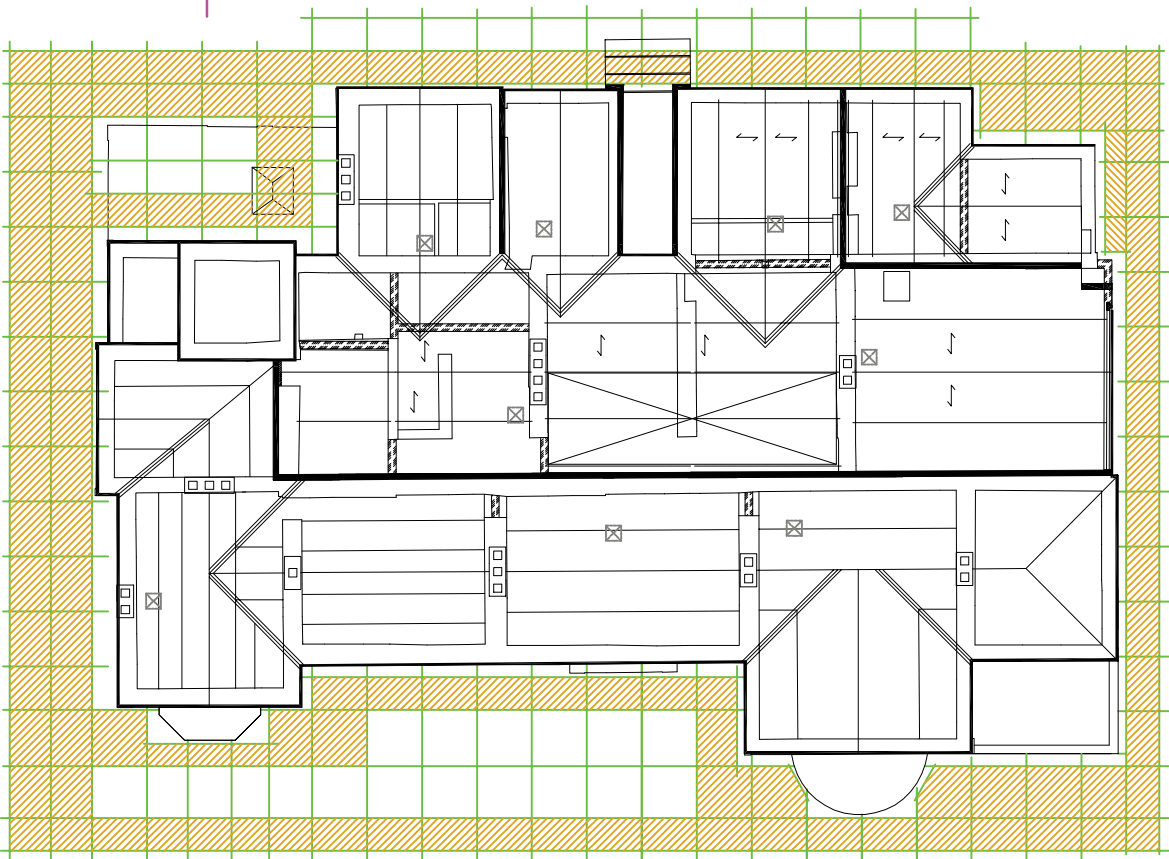


B



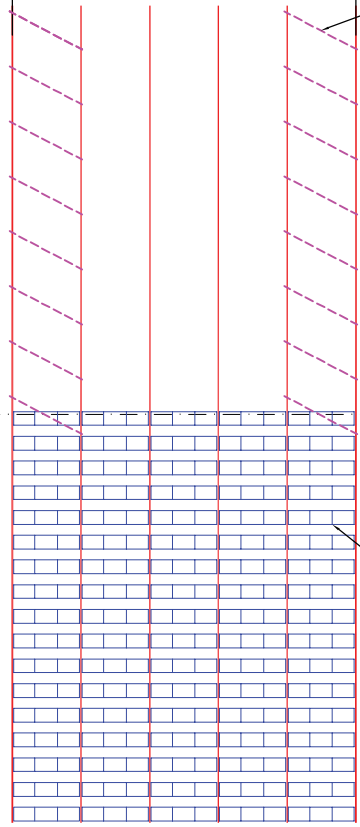
PLAN INDICATING THE POSITION OF THE BOARDED PLATFORMS

B

PLATFORM DESIGN LOAD $1.5 + 1.0 \times 0.75 \text{ kN/m}^2$

WORKING DRAWING

5 BAYS @2500=12500



PLAN ON EXTENT OF TEMPORARY ROOF

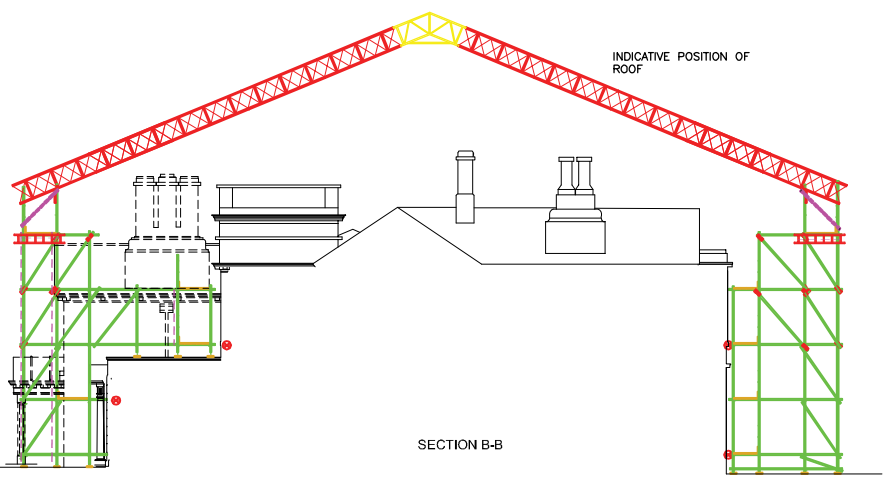
BRACING POSITIONS

PURLIN FRAME POSITIONS IN ACCORDANCE WITH MANUFACTURERS RECOMMENDATIONS

IMPORTANT NOTE:
 THIS SCAFFOLD IS TO BE CONSTRUCTED ONLY WITH PRESKO 12.5KN CAPACITY COUPLERS THE ONLY EXCEPTIONS ARE THE FACADE BRACES AND THE CROSS BRACES BELOW THE TOP TIE POSITION

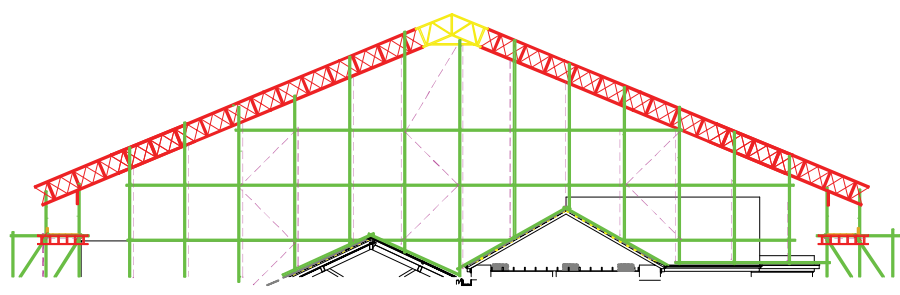
THE TRANSOMS ARE TO BE CONNECTED AT THE STANDARD/LEDGER NODE POINT WITH THE PRESKO COUPLERS AND THE BOARD TRANSOMS AT THE INTERMEDIATE POSITION CAN BE CONNECTED WITH SINGLES TO THE LEDGERS

ALL CROSS BRACES AT THE TOP 2 SCAFFOLD LIFTS (ABOVE THE TOP TIE) ARE TO BE CONNECTED TO THE LEDGERS WITH PRESKO DOUBLE COUPLERS




SECTION B-B

INDICATIVE POSITION OF ROOF



ELEVATION ON ROOF CLOSURE SCAFFOLD TO GABLES

Rev	Date	Description	Checked


 43, Old Ferry Whorley Bridge High Peak Derbyshire SK23 7HS
 Tel No 01463 734655/07834 828284
 E-Mail ousehouse@bt.com

Client: CHESHIRE SCAFFOLDS
 Site: HAZELWOOD HALL SILVERDALE
 Drawing Title: ACCESS SCAFFOLD AND PART TEMPORARY ROOF
 Scale: 1:100 @ Date: 07/09/06 Drawing Number: 06-MSD-396-1 Rev:

Drawn: D. Carden

Document Produced by deskPDF Unregistered for www.docuDesk.com